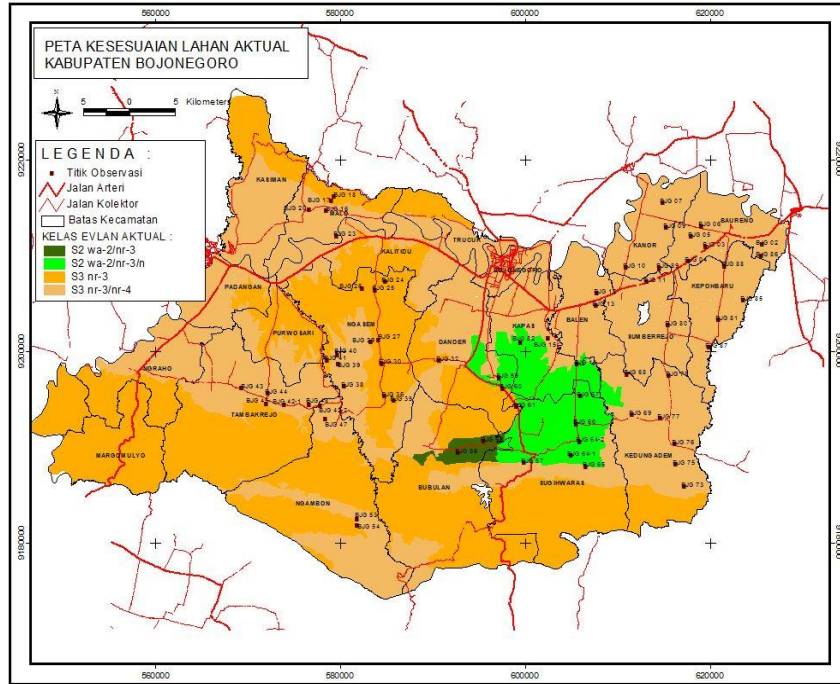


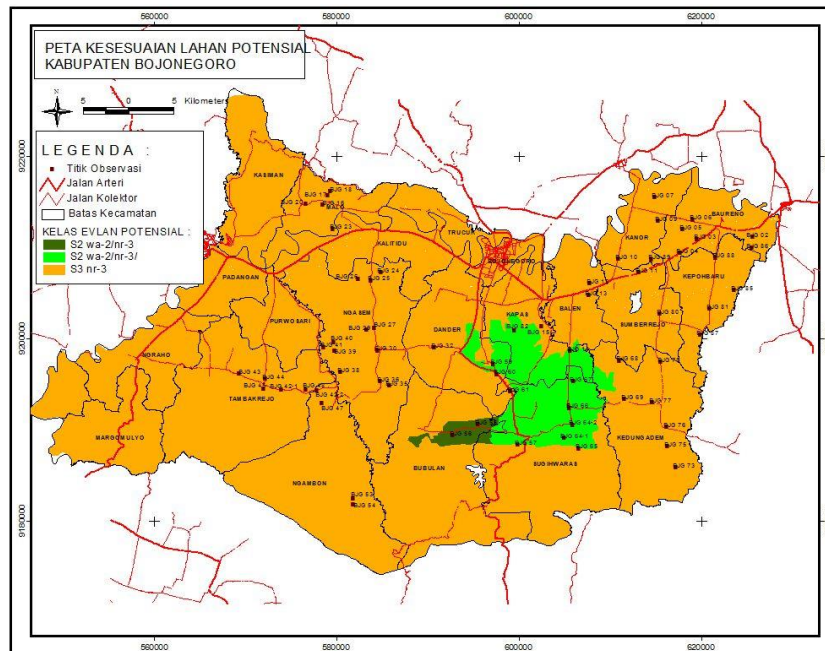
TEBAKAU VIRGINIA

Kesesuaian Lahan:

1. Tembakau Virginia, Bojonegoro



Gambar Peta Kesesuaian Lahan Aktual



Gambar Peta Kesesuaian Lahan Potensial

Tabel Kriteria Kesesuaian Lahan Tembakau di Kabupaten Bojonegoro

Kode	Kesesuaian Lahan Aktual			Kesesuaian Lahan Potensial			Lokasi	
	Kelas	Faktor Pembatas	Notasi	Kelas	Faktor Pembatas	Notasi	Desa	Kecamatan
2	S3	pH H ₂ O, C-organik	S3 nr-3/nr-4	S3	pH H ₂ O	S3 nr-3	Selorejo	Baureno
3	S3	pH H ₂ O, C-organik	S3 nr-3/nr-4	S3	pH H ₂ O	S3 nr-3	Sratu Rejo	Baureno
4	S3	pH H ₂ O	S3 nr-3	S3	pH H ₂ O	S3 nr-3	Ngemplak	Baureno
5	S3	pH H ₂ O, C-organik	S3 nr-3/nr-4	S3	pH H ₂ O	S3 nr-3	Banjaran	Baureno
6	S3	pH H ₂ O, C-organik	S3 nr-3/nr-4	S3	pH H ₂ O	S3 nr-3	Pomahan	Baureno
7	S3	pH H ₂ O, C-organik	S3 nr-3/nr-4	S3	pH H ₂ O	S3 nr-3	Prigi	Kanor
9	S3	pH H ₂ O, C-organik	S3 nr-3/nr-4	S3	pH H ₂ O	S3 nr-3	Simorejo	Kanor
10	S3	pH H ₂ O, C-organik	S3 nr-3/nr-4	S3	pH H ₂ O	S3 nr-3	Tejo	Kanor
11	S3	pH H ₂ O, C-organik	S3 nr-3/nr-4	S3	pH H ₂ O	S3 nr-3	Prayungan	Sumberjo
12	S3	pH H ₂ O	S3 nr-3	S3	pH H ₂ O	S3 nr-3	Margo Mulyo	Sumberjo
13	S3	pH H ₂ O	S3 nr-3	S3	pH H ₂ O	S3 nr-3	Margo Mulyo	Sumberjo
14	S3	pH H ₂ O, C-organik	S3 nr-3/nr-4	S3	pH H ₂ O	S3 nr-3	Mayang Kawis	Balen
15	S3	pH H ₂ O	S3 nr-3	S3	pH H ₂ O	S3 nr-3	Sumberjo Kidul	Sukosewu
16	S3	pH H ₂ O	S3 nr-3	S3	pH H ₂ O	S3 nr-3	Tinawun	Malo
17	S3	pH H ₂ O	S3 nr-3	S3	pH H ₂ O	S3 nr-3	Kedung Rejo	Malo
18	S3	pH H ₂ O	S3 nr-3	S3	pH H ₂ O	S3 nr-3	Kedung Rejo	Malo
20	S3	pH H ₂ O, C-organik	S3 nr-3/nr-4	S3	pH H ₂ O	S3 nr-3	Sumber Rejo	Malo
23	S3	pH H ₂ O, C-organik	S3 nr-3/nr-4	S3	pH H ₂ O	S3 nr-3	Ngujung	Malo
24	S3	pH H ₂ O	S3 nr-3	S3	pH H ₂ O	S3 nr-3	Jampet	Ngasem
25	S3	pH H ₂ O	S3 nr-3	S3	pH H ₂ O	S3 nr-3	Jelu	Ngasem
26	S3	pH H ₂ O	S3 nr-3	S3	pH H ₂ O	S3 nr-3	Jelu	Ngasem
27	S3	pH H ₂ O	S3 nr-3	S3	pH H ₂ O	S3 nr-3	Ngantru	Ngasem
29	S3	pH H ₂ O	S3 nr-3	S3	pH H ₂ O	S3 nr-3	Ngantru	Ngasem
30	S3	pH H ₂ O, C-organik	S3 nr-3/nr-4	S3	pH H ₂ O	S3 nr-3	Ngasem	Ngasem
32	S3	pH H ₂ O	S3 nr-3	S3	pH H ₂ O	S3 nr-3	Ngunut	Dander
35	S3	pH H ₂ O, C-organik	S3 nr-3/nr-4	S3	pH H ₂ O	S3 nr-3	Butoh	Ngasem
38	S3	pH H ₂ O	S3 nr-3	S3	pH H ₂ O	S3 nr-3	Trenggulunan	Ngasem
39	S3	pH H ₂ O, C-organik	S3 nr-3/nr-4	S3	pH H ₂ O	S3 nr-3	Madiyunan	Ngasem

40	S3	pH H ₂ O, C-organik	S3 nr-3/nr-4	S3	pH H ₂ O	S3 nr-3	Bandung Rejo	Ngasem
41	S3	pH H ₂ O, C-organik	S3 nr-3/nr-4	S3	pH H ₂ O	S3 nr-3	Bandung Rejo	Ngasem
42-1	S3	pH H ₂ O, C-organik	S3 nr-3/nr-4	S3	pH H ₂ O	S3 nr-3	Bendo Rejo Kidul	Ngasem
42-2	S3	pH H ₂ O, C-organik	S3 nr-3/nr-4	S3	pH H ₂ O	S3 nr-3	Maling Mati	Tambak Rejo
43	S3	pH H ₂ O, C-organik	S3 nr-3/nr-4	S3	pH H ₂ O	S3 nr-3	Bendo Rejo Kidul	Ngasem
44	S3	pH H ₂ O, C-organik	S3 nr-3/nr-4	S3	pH H ₂ O	S3 nr-3	Maling Mati	Tambak Rejo
45	S3	pH H ₂ O	S3 nr-3	S3	pH H ₂ O	S3 nr-3	Maling Mati	Tambak Rejo
47	S3	pH H ₂ O, C-organik	S3 nr-3/nr-4	S3	pH H ₂ O	S3 nr-3	Tambak Rejo	Tambak Rejo
48	S3	pH H ₂ O, C-organik	S3 nr-3/nr-4	S3	pH H ₂ O	S3 nr-3	Maling Mati	Tambak Rejo
53	S3	pH H ₂ O, C-organik	S3 nr-3/nr-4	S3	pH H ₂ O	S3 nr-3	Maling Mati	Tambak Rejo
54	S3	pH H ₂ O	S3 nr-3	S3	pH H ₂ O	S3 nr-3	Sengon	Ngambon
55	S3	pH H ₂ O	S3 nr-3	S3	pH H ₂ O	S3 nr-3	Turi	Ngambon
56	S2	Ketersediaan oksigen, pH H ₂ O	S2 wa-2/nr-3	S2	Kelembaban udara, pH H ₂ O	S2 wa-2/nr-3	Sekar	Sekar
57	S3	pH H ₂ O, C-organik	S3 nr-3/nr-4	S3	pH H ₂ O	S3 nr-3	Sekar	Sekar
59	S3	pH H ₂ O	S3 nr-3	S3	pH H ₂ O	S3 nr-3	Nogoro Gunung	Bubulan
60	S3	pH H ₂ O	S3 nr-3	S3	pH H ₂ O	S3 nr-3	Sumber Bendo	Bubulan
61	S3	pH H ₂ O	S3 nr-3	S3	pH H ₂ O	S3 nr-3	Sumber Bendo	Bubulan
64-1	S3	pH H ₂ O, C-organik	S3 nr-3/nr-4	S3	pH H ₂ O	S3 nr-3	Kunci	Dander
64-2	S3	pH H ₂ O, C-organik	S3 nr-3/nr-4	S3	pH H ₂ O	S3 nr-3	Kunci	Dander
65	S3	pH H ₂ O, C-organik	S3 nr-3/nr-4	S3	pH H ₂ O	S3 nr-3	Kunci	Dander
66	S3	pH H ₂ O, C-organik	S3 nr-3/nr-4	S3	pH H ₂ O	S3 nr-3	Kunci	Dander
67	S3	pH H ₂ O	S3 nr-3	S3	pH H ₂ O	S3 nr-3	Alasgung	Sugih Waras
68	S3	pH H ₂ O	S3 nr-3	S3	pH H ₂ O	S3 nr-3	Alasgung	Sugih Waras
69	S3	C-Organik	S3 nr-4	S2	Kelembaban udara, pH H ₂ O, C-organik	S2 wa-2/nr-3/nr-4	Bareng	Sugih Waras
73	S3	pH H ₂ O	S3 nr-3	S3	pH H ₂ O	S3 nr-3	Siwalan	Sugih Waras
75	S3	pH H ₂ O, C-organik	S3 nr-3/nr-4	S3	pH H ₂ O	S3 nr-3	Glagah Wangi	Sugih Waras
76	S3	pH H ₂ O	S3 nr-3	S3	pH H ₂ O	S3 nr-3	Tlogo Agung	Kedung Adem
77	S3	pH H ₂ O, C-organik	S3 nr-3/nr-4	S3	pH H ₂ O	S3 nr-3	Megale	Kedung Adem
78	S3	pH H ₂ O, C-organik	S3 nr-3/nr-4	S3	pH H ₂ O	S3 nr-3	Tondomulo	Kedung Adem
80	S3	pH H ₂ O, C-organik	S3 nr-3/nr-4	S3	pH H ₂ O	S3 nr-3	Tondomulo	Kedung Adem

81	S3	pH H ₂ O, C-organik	S3 nr-3/nr-4	S3	pH H ₂ O	S3 nr-3	Mlideg	Kedung Adem
82	S2	Ketersediaan oksigen, pH H ₂ O, C-organik	S2 wa-2/nr-3/nr-4	S2	Kelembaban udara, pH H ₂ O, C-organik	S2 wa-2/nr-3/nr-4	Kedung Adem	Kedung Adem
85	S3	pH H ₂ O	S3 nr-3	S3	pH H ₂ O	S3 nr-3	Jambe Rejo	Kedung Adem
87	S3	pH H ₂ O, C-organik	S3 nr-3/nr-4	S3	pH H ₂ O	S3 nr-3	Wotan	Sumber Rejo
88	S3	Ketersediaan oksigen, pH H ₂ O, C-organik	S3 Oa/nr-3/nr-4	S3	Ketersediaan oksigen, pH	S3 Oa/nr-3	Sido Mukti	Kepoh Baru
89	S3	pH H ₂ O, C-organik	S3 nr-3/nr-4	S3	pH H ₂ O	S3 nr-3	Sumberjo Kidul	Sukosewu

Keterangan :

Marginal; N : Tidak Sesuai

tc : Temperatur Udara

oa : Drainase

rc3 : Kedalaman Solum

nr1 : KTK Liat; nr2 : Kejenuhan Basa; nr3 : pH tanah; nr4 : C-Organik

lp1 : Batuan Permukaan; lp2 : Singkapan Batuan

S3rc1 : Kelas sesuai marginal dengan faktor pembatas tekstur tanah

S1 : Sangat Sesuai; S2 : Cukup Sesuai; S3 : Sesuai

wa1 : Curah Hujan; wa2 :Kelembaban Udara

rc1 : Tekstur; rc2 : Bahan Kasar;

eh1 : Lereng; eh2 : Kelas Bahaya Erosi; eh : Bahaya Erosi